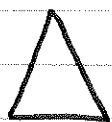


Classifying Triangles

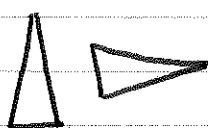
TWO ways to classify triangles

1

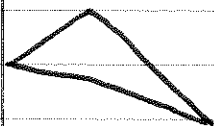
Classify triangles by their SIDES (in, ft, yds, m)



Equilateral Triangle - **ALL** sides are equal



Isosceles Triangle - **TWO** sides are the same



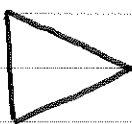
Scalene Triangle - **NO** sides are the same → **SC**alene triangles are **SC**ary

2

Classify triangles by their ANGLES (inside the shape)



Right Triangle - **ONE** angle is a right angle (90°)

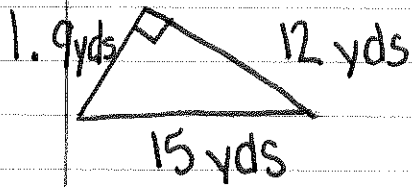


Acute Triangle - **ALL THREE** angles are acute angles (89° and lower)

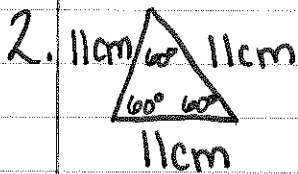


Obtuse Triangle - **ONE** angle is obtuse ($91^\circ - 180^\circ$)

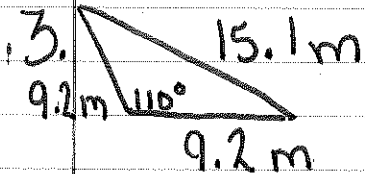
Classify each triangle by its sides and angles.



Scalene triangle
right triangle



equilateral triangle
Acute triangle



isosceles triangle
obtuse triangle