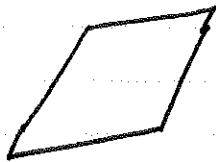


Area of Parallelograms & Triangles

* A parallelogram is a quadrilateral with 2 sets of parallel sides.



Rhombus

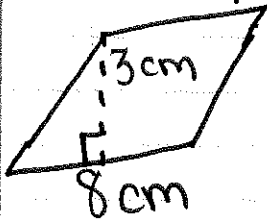


Parallelogram

* Formula *

$$\text{Area} = \text{Base} \times \text{Height} \rightarrow A = BH$$

* Example:

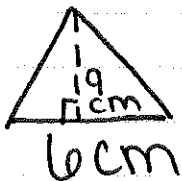


$$\begin{aligned} A &= BH \\ &= 8 \times 3 \\ &= 24 \text{ cm}^2 \end{aligned}$$

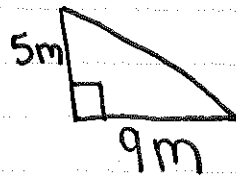
* Formula for Triangle *

$$\text{Area} = \frac{1}{2} \times \text{Base} \times \text{Height} \rightarrow A = \frac{1}{2}BH$$

* Example:



$$\begin{aligned} A &= \frac{1}{2}BH \\ &= \frac{1}{2} \times 6 \times 9 \\ &= 3 \times 9 \\ &= 27 \text{ cm}^2 \end{aligned}$$



$$\begin{aligned} A &= \frac{1}{2}BH \\ &= \frac{1}{2} \times 9 \times 5 \\ &= 4.5 \times 5 \\ &= 22.5 \text{ m}^2 \end{aligned}$$

$$\begin{array}{r} 4.5 \quad (1) \\ \times 5 \quad (0) \\ \hline 22.5 \quad (1) \end{array}$$